

A poster for NOVA Music Theatre's production of Disney's Beauty and the Beast. The background is a dark blue night sky filled with white stars of various sizes. In the center, there is a white silhouette of Belle's profile facing right, with her hair flowing upwards. A red rose is positioned near her chin. To the left of the profile, the text "Disney BEAUTY AND THE BEAST" is written in a white, stylized font. Above the profile, it says "NOVA MUSIC THEATRE's Production of". Below the profile, the dates "May 4 - 19, 2019" are displayed. Further down, the word "Bookings" is written above the phone numbers "1300 304433 or 9262 6555". Below the phone numbers is the website "http://www.novamusictheatre.com.au". At the bottom of the poster, the credits are listed: "Music by Alan Menken", "Lyrics by Howard Ashman & Tim Rice", and "Book by Linda Woolverton". At the very bottom, in smaller text, it says "Licensed exclusively by Music Theatre International (Australia) All performance materials supplied by Hal Leonard Australia".

NOVA MUSIC THEATRE's
Production of

Disney
BEAUTY
AND THE
BEAST

May 4 - 19, 2019

Bookings
1300 304433 or 9262 6555
<http://www.novamusictheatre.com.au>

At the Whitehorse Centre, Nunawading

Music by Alan Menken Lyrics by Howard Ashman & Tim Rice Book by Linda Woolverton

Licensed exclusively by Music Theatre International (Australia)
All performance materials supplied by Hal Leonard Australia

AUDITION PACK

Production Team

Director Noel Browne

Musical Director ... John Clancy

Choreographer ... Wayne Robinson

NOVA's production of "Beauty and The Beast" will be performed at the Whitehorse Centre in Nunawading from May 4 to 19, 2019. Rehearsals are usually held in Box Hill on Sundays 1pm – 5pm and Monday & Thursday evenings 7pm – 11pm. There will be a Sitz Probe on Sunday, April 28. Production week will be in the week beginning April 29 with a call time at the theatre of 6pm to approximately 12 pm. All cast are required to attend all rehearsals in production week. There will also be a mandatory photocall and a mandatory weekend rehearsal with dates to be advised at the first rehearsal.

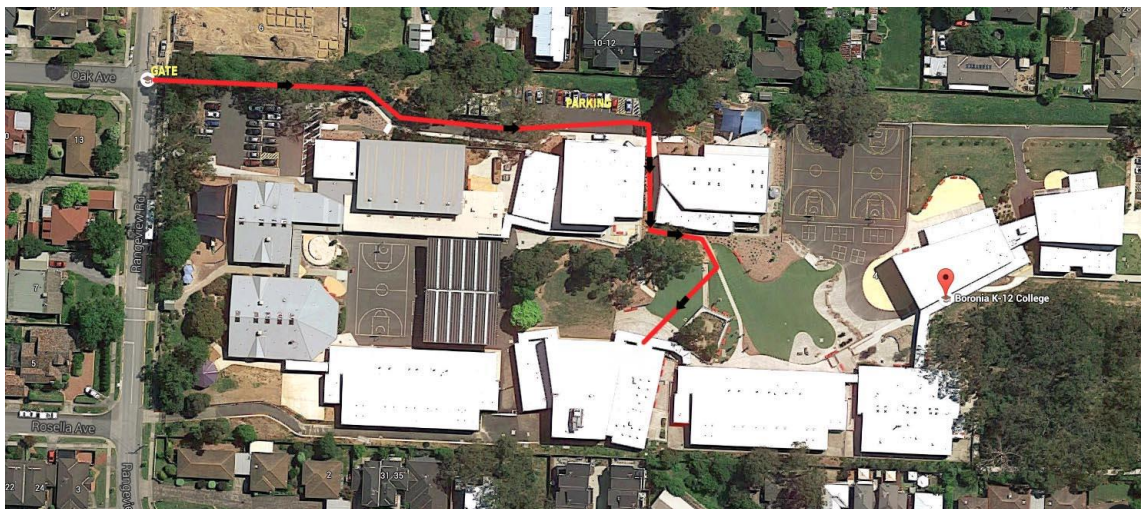
AUDITIONS

Where:

Boronia K-12 College Theatre, enter from Rangeview Rd, Boronia. (Melway 65 B8)

Please park in the lower car park and follow the path between the buildings. You'll see the performing arts building straight ahead. Do not park in the Albert Ave carpark.

Please arrive at least 10 minutes before your audition time in order to complete the required paper work. Please print and complete the audition form at the end of this pack and bring it with you with a headshot attached.



AUDITION REQUIREMENTS:

Singing (all roles):

Auditionees should prepare **TWO contrasting** songs for their audition – The songs should be from a musical (but **not from "Beauty and The Beast"**) and in a style that is consistent with the character you are auditioning for. This should be something that you are **very** comfortable with – not something you learned the day before!

Please bring sheet music (in the correct key). There will be an accompanist at the audition. Backing CDs are not acceptable. Please be aware that you may not get to sing all/and/or both of your song/s. We are expecting large numbers of people to audition, so if the Audition Panel feels they have heard enough to determine your vocal quality they may stop you mid note. This should not be

taken as any indicator of whether you will or will not be cast!!

Dancing:

While some roles do not require dancing, there is a lot of dancing in "Beauty and The Beast" and we'd like to see how everyone moves. A separate dance audition will be held on **Sunday, November 18th 2018 at 10:30am.**

Call Backs:

Call backs (recalls) will be held as required. You'll be notified as soon as possible after your singing audition if you will be required for a call back.

IMPORTANT INFORMATION FOR ALL AUDITIONEES

- No roles have been pre-cast.
- Audition time is strictly limited so use your time to show the panel what you can do. No extra time will be available. The panel will be looking for vocal quality, range and pitch as well as dramatic and movement ability.
- Audition pieces should be well prepared. Remember, it is in your own interests to present yourself well.
- An accompanist will be provided.
- Singing unaccompanied or with a CD is **not acceptable**.
- All auditions are private and may only be attended by the panel and auditionees.
- Your singing audition will take about 5 mins and consists of you singing your selected song for the panel. The panel will evaluate your song selection on what we hear. We know what we are looking for, so don't be concerned if you are not required to sing an entire song.
- Please don't apologise to the panel for the state of your health or your voice.
- Please printout and complete the last 2 pages of this document and attach your headshot and bring this with you to your audition.
- There will be recalls as required. Those required for a call back will be notified as soon as possible after the initial round of auditions.
- All auditionees will be notified of the outcome of their audition as soon as possible. Please do not contact us, we will definitely contact you via the email address or phone number you provided. Cast announcement will occur via our website, Theatre People, Twitter, Instagram and Facebook asap.
- Rehearsals are held on Sunday afternoons, Monday & Thursday nights. We expect all cast to be available to attend all rehearsals.
- Please provide us with any dates you are not available during the rehearsal process.
- And most of all, enjoy it!! This is your moment to shine!
- Your audition will be videoed for reference only during the casting process.
- Cast must adhere to the company code of conduct at all times
- No photos or videos of rehearsals, costumes, props, or choreography are to be published (**particularly on social media**) without the express consent of the Nova Committee.
- NOVA reserves the right to take photographs of cast members for casting, costumes, make up, publicity and program purpose and these may be used in any form of media
- Cast will be required to provide their own hosiery, basic make up and shoes

Please note that NOVA Music Theatre reserves the right, at its sole and absolute discretion, to not cast any role from these auditions if, in the opinion of the Audition Panel, the right person for the role is not found. In this event NOVA may pursue other means to fill a vacant role.

SONG LIST

Act One

- Overture — Orchestra
- Prologue — Orchestra
- Belle — Belle, Gaston, Lefou and Townsfolk
- No Matter What - Maurice and Belle
- No Matter What [Reprise]/Wolf Chase — Maurice
- Me — Gaston and Belle
- Belle (Reprise) — Belle
- Home — Belle
- Home (Reprise) - Mrs. Potts
- Gaston — Gaston, Lefou and townsfolk
- Gaston (Reprise) — Gaston and Lefou
- How Long Must This Go On? — Beast
- Be Our Guest — Lumiere, Enchanted Objects, Ensemble
- If I Can't Love Her — Beast

Act Two

- Entr'acte/Wolf Chase — Orchestra
- Something There — Belle, Beast, Lumiere, Mrs. Potts, Cogsworth, and Chip
- Human Again — Belle, Beast, Lumiere, Enchanted Objects, Ensemble
- Maison des Lunes - Monsieur D'Arque, Gaston and Lefou
- Beauty and the Beast — Mrs. Potts
- If I Can't Love Her (Reprise) — Beast
- A Change in Me — Belle
- The Mob Song — Gaston and the Mob
- The Battle - The Mob and Enchanted Objects
- Home (Reprise) — Belle
- Transformation — The Company
- Finale (Beauty and the Beast (Reprise)) - The Company
- Bows (Beauty and the Beast (Reprise)) - The Company

CHARACTER DESCRIPTIONS

BELLE (Female 18-25) *Soprano (Low A-High F)* Belle is a young woman who feels trapped in her provincial small-minded town. She is a strong, intelligent, spirited and independent young woman. Belle is the moral compass of the story, elevated by her thoughts and deeds. The maturity and depth of her character allow her to see the true beauty and spirit within The Beast, and to love him for it. This role requires a strong singer who portrays innocence with her singing and speaking voice.

THE BEAST/PRINCE (Male 25-40) *Baritone (A-High F)* The Beast's tortured soul is evident for all to see. He is paying the ultimate price for a moment of mean-spiritedness, and wishes that he could rectify his mistake. There is anger and menace in The Beast's appearance and behaviour, but increasingly we see his soft and enduring side as he interacts with Belle and recaptures his humanity. The role requires a very strong singer, and the actor must have a strong speaking voice and stage presence for what will be a very physically demanding role.

GASTON (Male 20-35) *Baritone (A-High F)* Gaston is the absolute antithesis of The Beast. Although he is physically handsome, he is shallow, completely self-centered, not very bright, and thrives on attention. This role requires a strong singer and character actor who moves well. Muscular stature preferred.

LEFOU (Male 20-35) *Baritone (B-High F#)* Lefou is Gaston's dim-witted, servile sidekick. He goes to extraordinary lengths and suffers repeated humiliation in his efforts to please his master. The actor must be comfortable with physical comedy, and the role requires strong character and comedic acting.

MAURICE (Male 45-65) *Baritone (Bb-High Db)* Despite being a bit scatter-brained, there is no mistaking Maurice's steadfast love for his daughter Belle. Kindly, gentle, enthusiastic and inventive, he becomes single-minded and determined when Belle faces danger.

LUMIERE (Male 25-40) *Tenor/Baritone (A-High F#)* Lumiere is the French butler who was transformed into a Candelabrum. He is light-hearted, suave, romantic, smooth-talking, and charming. He has a romantic involvement with Babette. This character requires a French accent. This role requires strong character acting, and he should move well.

COGSWORTH (Male 30 - 50) *Baritone (A-High E)* Cogsworth is a tightly-wound, enchanted mantle clock and the head of the Beast's household. He is a stuffy English man who loves perfection. This character speaks with a British accent. This role requires strong character acting.

MRS. POTTS (Female 30-50) *Alto/Mezzo (Low F#-High G)* Mrs. Potts is a warm-hearted, maternal enchanted teapot. She sings the title song Beauty and the Beast. This character speaks with a Cockney accent.

CHIP (Male 10 -14) *Boy Soprano (D-High D)* Chip is an inquisitive little teacup who is the son of Mrs. Potts

MADAME DE LA GRANDE BOUCHE (Female 30-50) *Soprano (C#-High G)* Madame is a former opera diva turned enchanted wardrobe. This character speaks with a French accent.

BABETTE (Female 25- 35) *Mezzo Soprano (C-C)* Babette is a saucy, enchanted feather-duster, and the object of Lumiere's affections. This role requires good character acting and she should move well, as she dances a tango with Lumiere during Be Our Guest. This character speaks with a French accent.

THREE SILLY GIRLS (Female 20 – 30) The silly girls are three pretty young maids who swoon over Gaston. They are featured dancers. Strong vocals, and comedic ability required.

MONSIEUR D'ARQUE (Male 30 – 50) D'arque is the creepy, scheming proprietor of the local insane asylum, The Maison De Lune. He may double as a townspeople, or may be filled by a cameo.

ENSEMBLE: The ensemble will fill a variety of speaking and singing roles throughout the show, and make up the townspeople characters, the enchanted objects and other characters. We are also looking for capable dancers to fill the roles of the wolves.

Rehearsal Information

Location: Unless otherwise notified, rehearsals are held at the NOVA MUSIC THEATRE Rehearsal Hall, Frank Sedgman Reserve, Elizabeth Street, Box Hill

Meet & Greet: Date to be confirmed.

Rehearsals will start Late January/Early February 2019:

Rehearsals are held at the following times. A detailed schedule will be provided and in the early stages of rehearsal you may not be required for all rehearsals.

Monday nights - 7.30pm to 10.30pm

Thursday nights – 7.30pm to 10.30pm

Sunday afternoons - 1.00pm to 5.00pm

Weekend Rehearsal: Boronia K-12 College, Saturday & Sunday, April 6&7, 2019

Bump In: Sunday, 28th April (Cast not required)

Theatre Rehearsal Dates:

Sitzprobe: Sunday, 28th April, time and location TBC

Production Week Rehearsals: (Cast required for all rehearsals)

- Monday 29th April - Tech
- Tuesday 30th April - Piano Tech Run
- Dress Rehearsals: May 1st, 2nd, 3rd

Performances: Total of 12 performances with 5 matinees

- Saturday, May 4th – 2:00pm
- Opening Gala Saturday, May 4th – 8:00pm
- Sunday, May 5th – 2:00pm
- Thursday, May 9th – 8:00pm
- Friday, May 10th – 8:00pm
- Saturday, May 11th – 2:00pm & 8:00pm
- Thursday, May 16th – 8:00pm
- Friday, May 17th – 8:00pm
- Saturday, May 18th – 2:00pm & 8:00pm
- Sunday, May 19th – 2:00pm

Call times in the theatre will be 1.5 hours prior to start times (6:30pm evenings and 12:30pm matinees) unless otherwise notified.

Cast members are expected to attend for the photo call, costume fitting, publicity and promotional events as required. These dates will be notified asap.

Bump Out: Sunday, May 19th after final performance – all cast are expected to help with this.

Theatre Location: Whitehorse Theatre, Whitehorse Rd, Nunawading

Show Fees: Fees for cast are set at \$140 (\$20 refund on return of costumes and script in good condition) comprising NOVA Music Theatre membership, Show Fees, Insurance, Tea & Coffee during rehearsals, Gala Supper, Dinner between shows on Saturday May 18th, a show mug & certificate, Production Photos (on a CD) & Headshots for the program and a video of the production. Fees are payable at the Meet & Greet.



Song 1 _____

Song 2 _____

Name

Address:

Phone: Mobile: E-Mail

Role you are auditioning for:

Will you accept another role: Y N Will you work in chorus: Y N

Do you read music: Y N Play an instrument: Y N Dance: Y N

List your experience & training here or attach CV.

List your dance training and experience.

Are you auditioning for another production: Y N Are you in another production: Y N

Are you available to Rehearse on Monday & Thursday evenings & Sunday PM: Y N

List any dates you are unavailable:

Please be sure that you are prepared to give this production your **FULL commitment!** In order to present a professional standard production, **we expect the cast to approach it professionally, in every way!**

We require you to **attend all rehearsals** as called and devote time to develop your Acting, Singing & Movement skills in order to convincingly portray your character. A detailed rehearsal schedule will be issued regularly giving adequate notice of your required rehearsal calls attendance.

Initial music calls will be held for the first few weeks Monday & Thursday & choreography will follow on Sunday afternoons. Setting scenes (blocking) will commence as the music is learned.

All scheduled rehearsals MUST be attended! Absences disrupt the rehearsal process.

****NOTE! Absences may necessitate replacing you in the production!****

To meet the above criteria the following must be agreed to:

- Attend rehearsals as called.
- Contribute to the production enthusiastically.
- Take direction.
- Wear costumes, wigs & makeup as directed.
- Attend publicity/photo calls.
- Attend working bees as rostered.
- Supply footwear as directed by wardrobe coordinator.
- Give **full co-operation** at all times to the production team.
- Attend costume calls.
- Arrive **on time (10 minutes before start time)** in order to start promptly.
- Do not miss **any** rehearsal calls.
- **Maintain a positive and supportive attitude towards the company and the production team!**
- **It is a committee requirement that you sell 20 tickets to the show.**

I have read the above and, if accepted into the production, I agree to abide by these criteria.

I agree to have my name listed on the cast list to be published on the NOVA & the Theatre People web sites & used for other publicity. YES NO

Signed Date